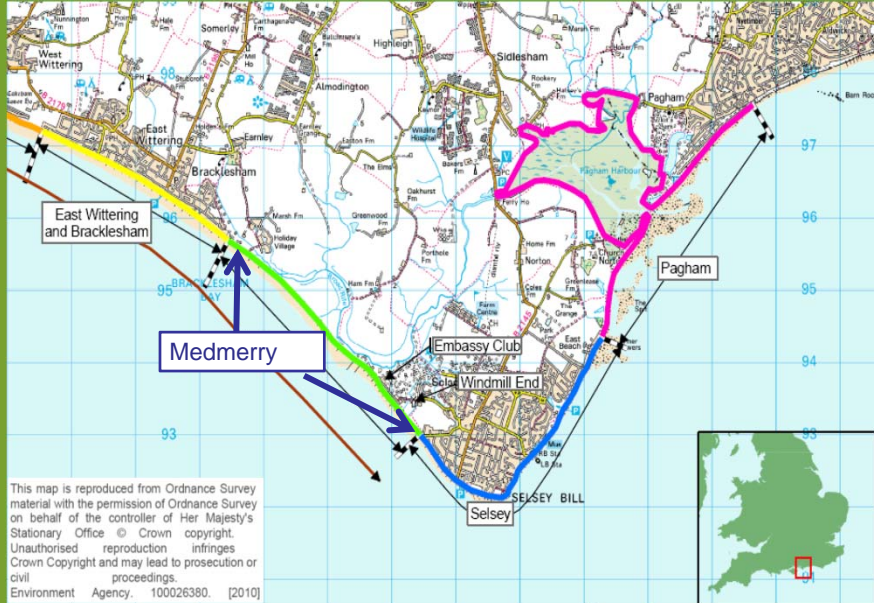


Community consultation on Medmerry coastal realignment scheme

Jonathan Hunter, Environment Agency
17th September 2013

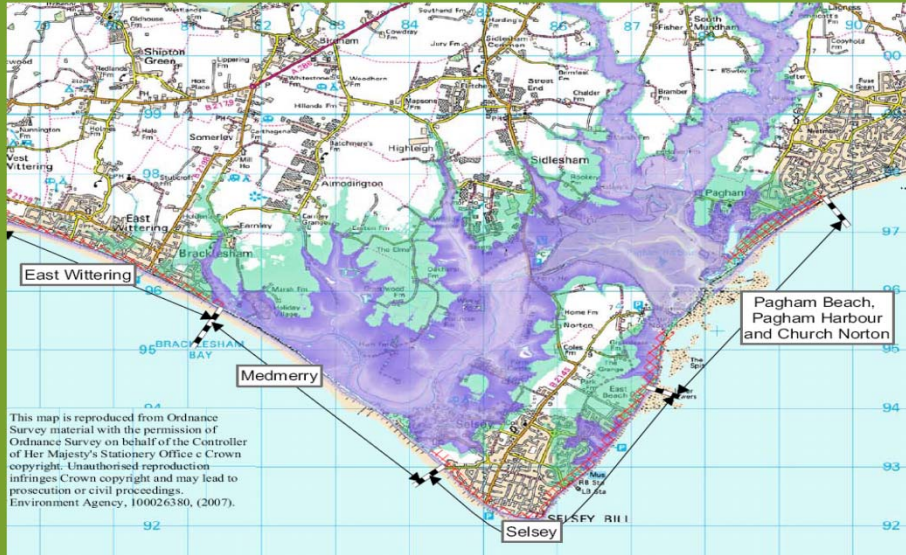


Medmerry





Coastal Flood Risk



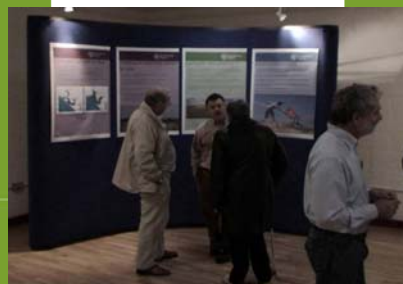
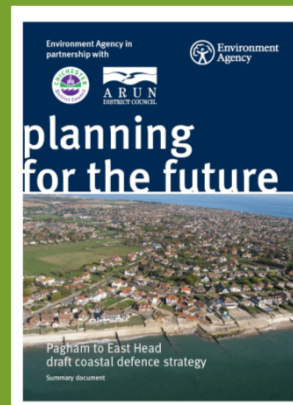
Language





Learning the lessons

- ⇒ Early engagement
- ⇒ Careful planning
- ⇒ Be proactive
- ⇒ Wrong perceptions
- ⇒ General acceptance
- ⇒ Not convinced



Designing community engagement

- ➔ explain how a scheme is developed
- ➔ encourage local input into this process
- ➔ collect information and aspirations
- ➔ feedback on options and bank locations
- ➔ identify local knowledge for detailed design
- ➔ Involve community groups
- ➔ Involve them in communicating

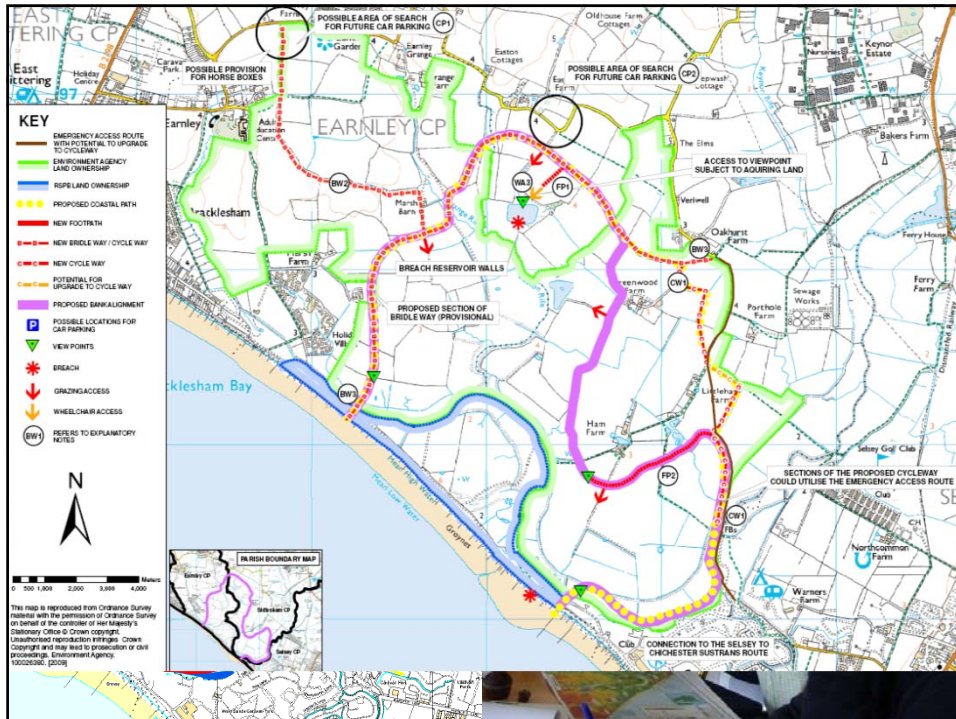


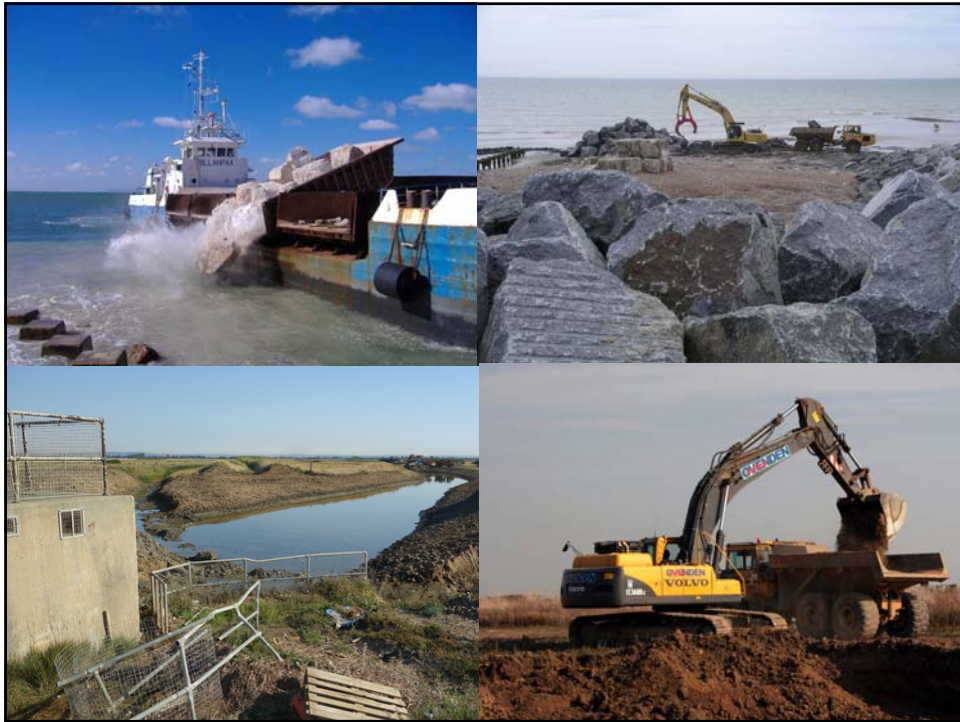
| Could influence | Could not influence |
|---|---|
| Location and design of banks | Strategic recommendation for managed realignment |
| Emergency access , footpath routes and other recreational enhancements | Timing for the design, planning and construction process |
| Construction access routes and use of site before / during construction | Location of the breach in the shingle bank and method of breach |
| Planning decisions | The standard of protection |
| Funding from other sources for recreational and habitat | Coastal processes, currents and geology impacting on the design |
| Decisions about drainage | Total budget available |

Stakeholder analysis

...so we invited local representatives to form a group

- Selsey Town Council
- Save Our Selsey
- Manhood Peninsula Steering Group
- Parish Councils
- Ham Residents Association
- Manhood Wildlife & Heritage
- Local farmers
- West Sussex County Council
- Manhood Cycleways Network
- Sussex Ornithological Society
- Wildfowlers
- Chichester District Council
- RSPB







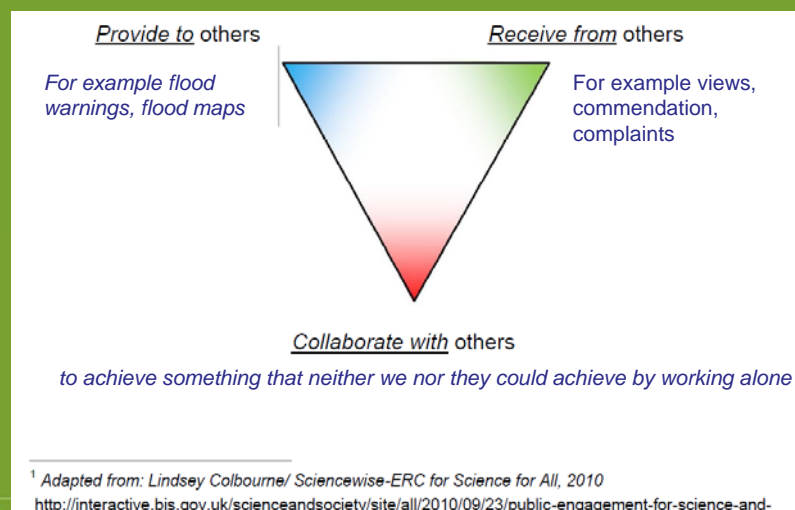
Working with others

- ⇒ Decide announce defend
- ⇒ Engage discuss decide
- ⇒ Collaborate

*Collaboration is when people choose to work together to **achieve something which they could not achieve by working alone**. This may be formalised into a partnership when it involves more substantial sharing of agreed risks, responsibilities and benefits.*



We engage to



Thank you

